

MEITRACK_ASDS301_Door magnetic sensor_Specifications



Document Record

| | | | |
|---------------------|---|------------------|--------------------|
| Document Title | MEITRACK_ASDS301_Door magnetic sensor_Specification | | |
| Applicable Products | | Date of Creation | 2025-04-21 |
| | | Date of Update | |
| Document Type | User Manual | Total Pages | 6 |
| Version | V1.0 | Confidentiality | External Documents |

Copyright and Disclaimer

Copyright © 2024 MEITRACK. All rights reserved.

MEITRACK and are trademarks that belong to Meitrack Group.

The user manual may be changed without notice.

Without prior written consent of Meitrack Group, this user manual, or any part thereof, may not be reproduced for any purpose whatsoever, or transmitted in any form, either electronically or mechanically, including photocopying and recording.

Meitrack Group shall not be liable for direct, indirect, special, incidental, or consequential damages (including but not limited to economic losses, personal injuries, and loss of assets and property) caused by the use, inability, or illegality to use the product or documentation.

Document Revision History

| Version | Date | Modification |
|---------|------------|----------------|
| 1.0 | 2025-04-21 | Initial Draft. |

Table of Contents

| | |
|---------------------------------------|-------|
| 1 Product Overview..... | - 4 - |
| 2 Specifications | - 4 - |
| 3. Product Dimensions:..... | - 5 - |
| 4. Product Circuit Description: | - 6 - |

1 Product Overview

The wired door magnetic sensor is specifically designed for mobile applications, such as large truck doors and container doors. It accurately detects the door's open and closed status in real time through the interaction of magnets and reed switches. The product employs a wired connection method, ensuring stable signal transmission free from wireless interference and distance limitations, thereby guaranteeing reliable delivery of door status information.

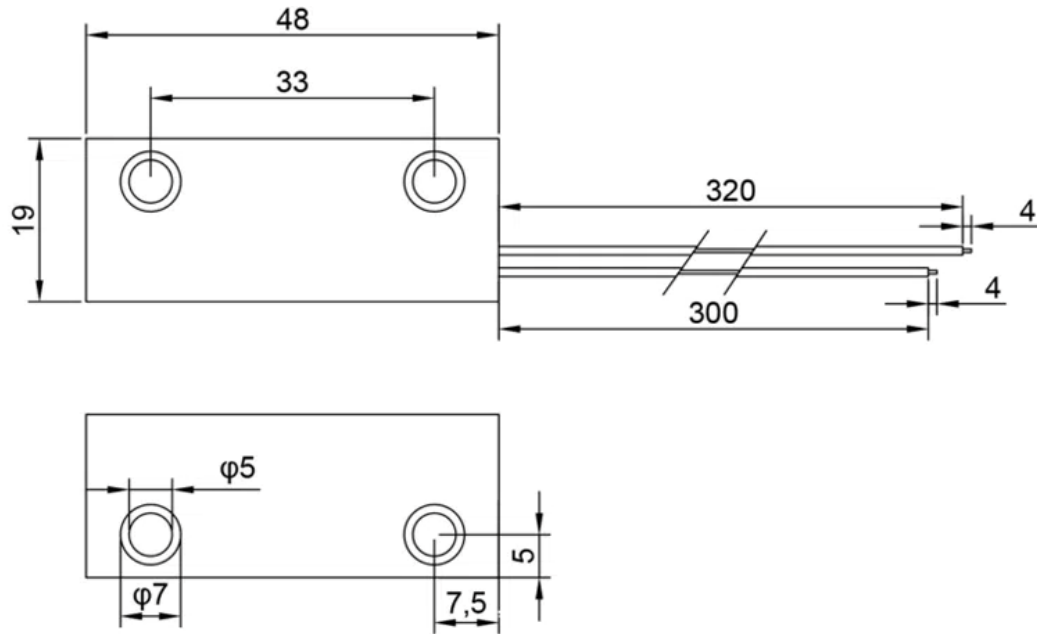
It can seamlessly integrate with GPS and MDVR products to enable the consolidation of door status with vehicle positioning and video monitoring data. In the event of abnormal door opening, an alarm is triggered immediately, and the location information along with the footage of the door opening is uploaded simultaneously, allowing users to monitor vehicle status in real time. This effectively mitigates risks such as cargo theft and unauthorized intrusion. The product is widely applicable in logistics transportation, freight management, and other sectors, providing comprehensive protection for mobile asset security. Product Specifications

2 Specifications and Parameters

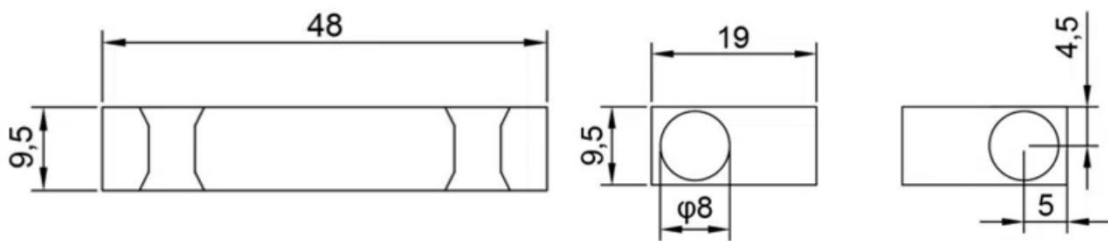
| Item | NC/NO Type | Unit |
|-----------------------------|---------------------|---------|
| Model | GY-ZN02-T | - |
| Switching Method | Conversion | - |
| Contact Resistance (RC) | 100max | mΩ |
| Break Value (D0) | 4min | AT |
| Contact Withstand Voltage | 150min | VDC |
| Insulation Resistance | 10 ⁹ min | Ω |
| Contact Capacitance | 1.5max | pF |
| Contact Capacity | 3 | VA |
| Maximum Switching Voltage | 30 | V·AC/DC |
| Maximum Switching Current | 0.2 | V·DC |
| Maximum Energized Current | 0.5 | A |
| Operating Time | 1.0max | ms |
| Bounce Time | 1.5max | ms |
| Release Time | 0.05max | ms |
| Resonant Frequency | 6000±400 | Hz |
| Maximum Drive Frequency | 200 | Hz |
| Operating Temperature Range | -40~80 | °C |
| Installation Method | Surface Mount | - |
| Housing Material | Zinc Alloy | - |
| Housing Color | Silver Gray | - |
| Wire Specification | 1007 22# | mm |
| Wire Length | 300 | mm |
| Wire Color | Gray, Red, White | - |
| Operating Distance | ≥20mm | mm |

| | | |
|-------------------|----------------------|---------|
| Product Weight | 55.5g | Pair |
| Product Packaging | 12 pairs per package | Package |

3 Product dimensions:



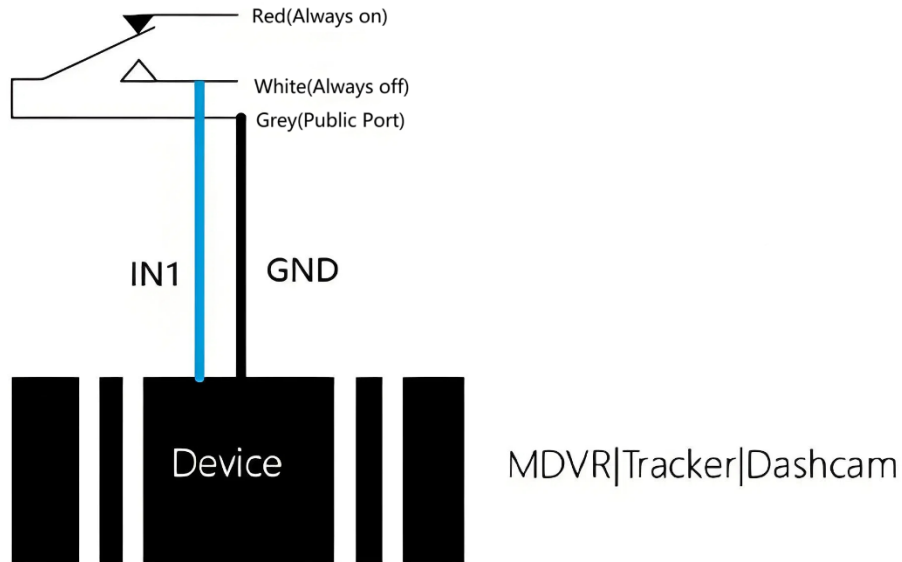
Top view



Side view

Front view

4 Product wiring description:



Tips: The common terminal is connected to VCC when positive triggering, and the common terminal is grounded when negative triggering.

If you have any further questions, please email us at info@meitrack.com. We are committed to serving you.